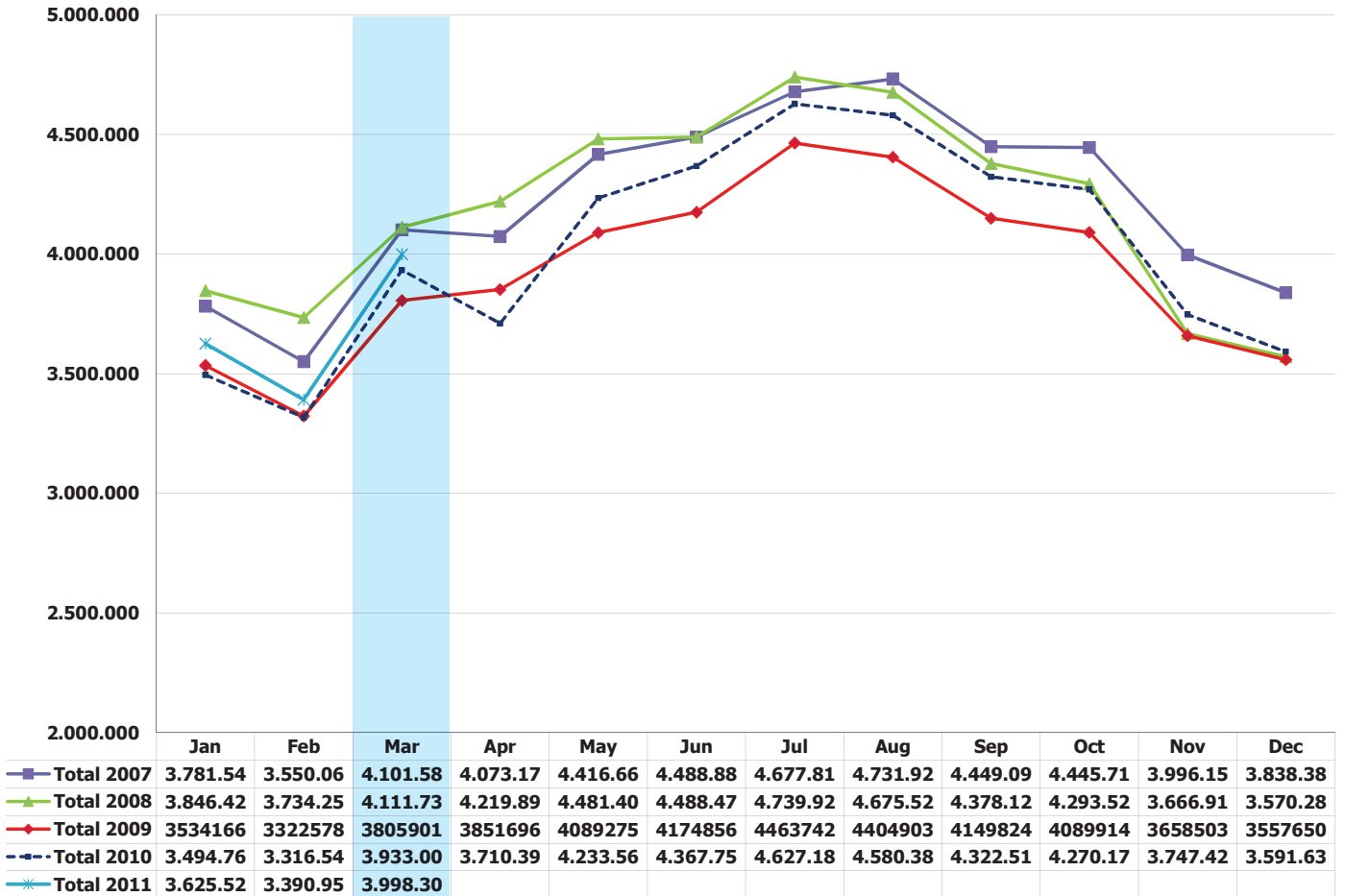


**YEAR TO DATE**

**IFR MOVEMENTS: MARCH 2011**



This year's growth trend continued into March as CANSO Members report that they controlled 1.7% more movements in March 2011 compared to the equivalent period last year.

\*Most European data sourced for STATFOR

\*\*Includes contributions from:

- Aena - ES
- AEROTHAI - TH
- Airservices AU
- Airways NZ
- ANS Czech
- ATNS - ZA
- Austrocontrol - AT
- Avinor - NO
- Belgocontrol
- BULATSA - BG
- CAAS - SG
- DFS - DE
- DHMI - TR
- DSNA - FR
- EANS - EE
- ENAV - IT
- FAA - USA
- Finavia -FI
- GCAA - UAE
- Hellenic - GR
- HungaroControl - HU
- IAA - IE
- ISAVIA - IS
- Kazaeronavigatsia - KZ
- LFV - SE
- LGS - LV
- LPS - SK
- LVNL - NL
- MATS - MT
- NAATC - AN
- NATA - AL
- NATS - UK
- NAV Portugal
- Naviair - DK
- Oro Navigacija - LT
- PANSA - PL
- ROMATSA - RO
- Sakaeronavigatsia - GE
- skyguide - CH
- Slovenia Control - SI
- SMATSA - RS & ME
- State ATM Corp - RU
- UkSATSE - UA